

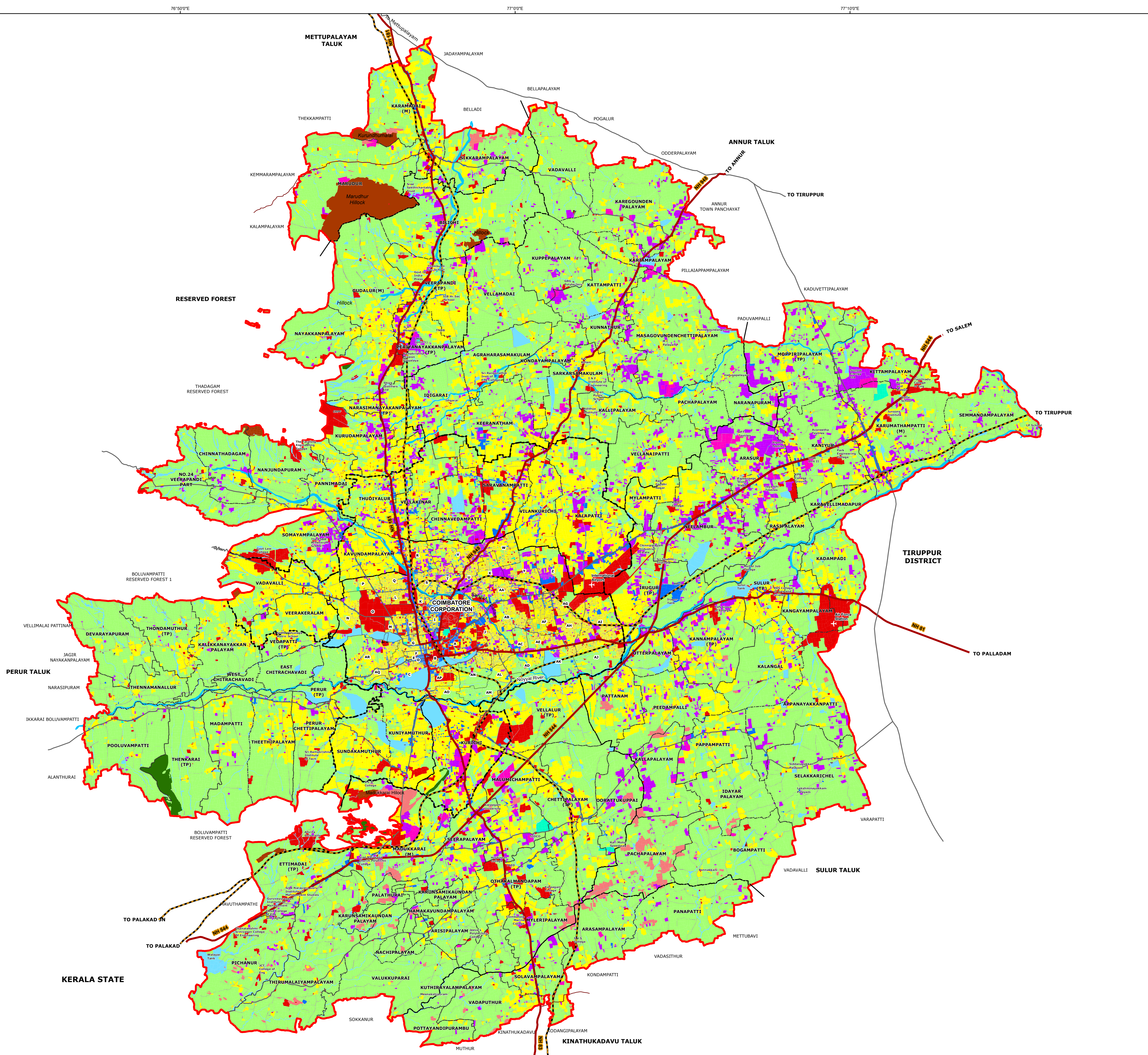
# MASTER PLAN

EXISTING LANDUSE - 2024

## COIMBATORE LPA

### Legend

- LOCAL PLANNING AREA BOUNDARY
- TALUK BOUNDARY
- VILLAGE BOUNDARY
- CORPORATION BOUNDARY
- NATIONAL HIGHWAYS
- STATE HIGHWAYS
- RAILWAY LINE
- WATERBODY
- RESERVED FOREST
- HILLOCK
- QUARRY
- LANDUSE ZONE**
- RESIDENTIAL
- COMMERCIAL
- INDUSTRIES
- SPECIAL AND HAZARDOUS INDUSTRIES
- INSTITUTIONAL
- OPENSACE & RECREATION
- AGRICULTURE



ASSISTANT DIRECTOR / JOINT DIRECTOR (FAC) / MEMBER SECRETARY  
COIMBATORE LOCAL PLANNING AUTHORITY,  
DISTRICT TOWN & COUNTRY PLANNING,  
COIMBATORE DISTRICT.

ASSISTANT DIRECTOR  
DIRECTORATE OF TOWN & COUNTRY PLANNING,  
CHENNAI.

JOINT DIRECTOR  
DIRECTORATE OF TOWN & COUNTRY PLANNING,  
CHENNAI.

DIRECTOR  
DIRECTORATE OF TOWN & COUNTRY PLANNING,  
CHENNAI.

ADDITIONAL CHIEF SECRETARY TO GOVERNMENT  
HOUSING AND URBAN DEVELOPMENT,  
GOVERNMENT OF TAMILNADU.

1:73,000

479.61 HEC  
53.29 HEC